

Note:

- AT-90W = MIPRO Uni-directional Antenna with Booster
- AT-70W = MIPRO Omni-directional Antenna with Booster
- AD-12 = Passive Divider/Combiner
- AT-70B = MIPRO Antenna Signal Booster
- RX1 & RX2 = MIPRO Wireless Receivers

Refer to actual product in the event of product description discrepancy.

Disposal Dispose of any unusable devices or batteries responsibly and in accordance with any applicable regulations.



2002-08-19

Disposing of used batteries with domestic waste is to be avoided!

Batteries / NiCad cells often contain heavy metals such as cadmium(Cd), mercury(Hg) and lead(Pb) that makes them unsuitable for disposal with domestic waste. You may return spent batteries/ accumulators free of charge to recycling centres or anywhere else batteries/accumulators are sold.

By doing so, you contribute to the conservation of our environment!

MIPRO[®]
MICROPHONE PROFESSIONALS

MIPRO Electronics Co., Ltd

Headquarters : 814 Pei-Kang Road, Chiayi, 60096, Taiwan
Tel : +886.5.238.0809 Fax : +886.5.238.0803
www.mipro.com.tw mipro@mipro.com.tw



2 CE458A

All rights reserved. MN 014/06

Do not copy or forward without prior approvals MIPRO.

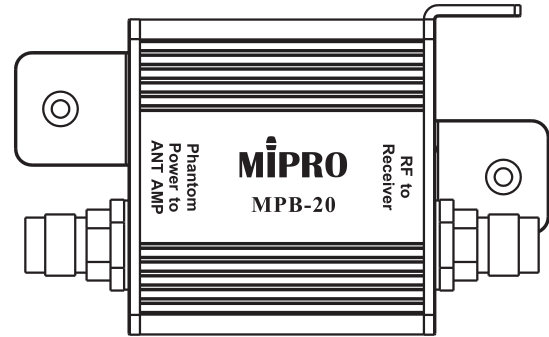
Specifications and design subject to change without notice.

MIPRO[®]

User Guide

MPB-20

Built-In Phantom Power Antenna Booster

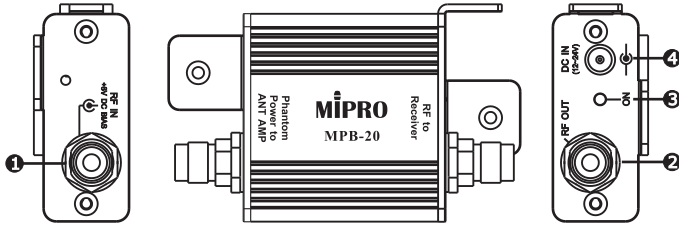


Please read this guide thoroughly before operating the unit

MPB-20 Built-In Phantom Power Antenna Booster

MIPRO MPB-20 supplies DC power into a coaxial cable to power any MIPRO remote antenna boosters.

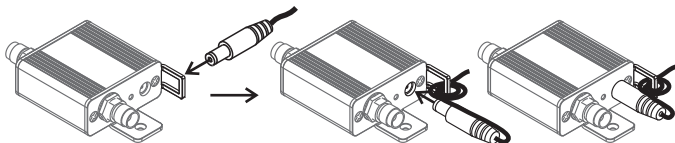
PART NAMES AND FUNCTIONS



- ❶ **RF Input:** Connect to antenna and provide 8V DC bias to antenna booster.
- ❷ **RF Output:** Connect to receiver or extended cable and antenna booster. No bias at this point.
- ❸ **Indicator LED:** LED on means the booster is activated. (when being connected to a receiver or DC power)
- ❹ **DC-in Socket:** Connect to 12V DC. Center pin of socket is positive (+) voltage.

DC Power Cable Connection

Insert and wrap cable according to the diagram for a firm and secure connection to a MBP-20.

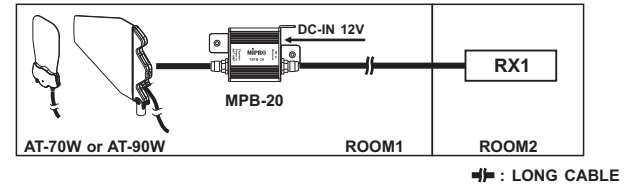


MPB-20 Built-In Phantom Power Antenna Booster

MPB-20 APPLICATION

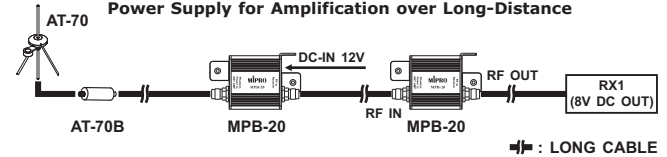
Application 1

Power Supply for Cross-Rooms Amplification



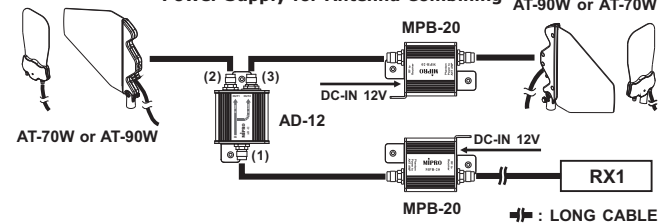
Application 2

Power Supply for Amplification over Long-Distance



Application 3

Power Supply for Antenna Combining



Application 4

Power Supply for Antenna Dividing

